

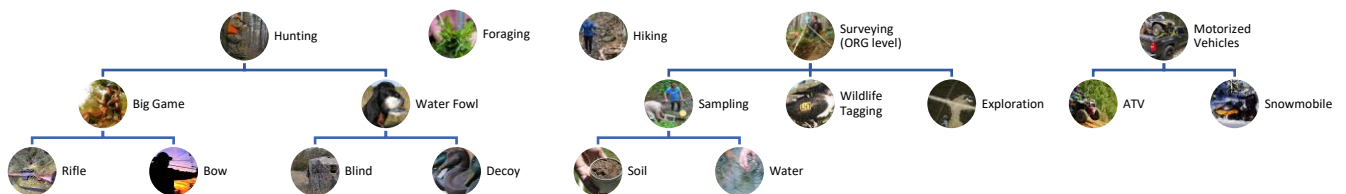


## Greetings from SaskLander!

If this is the first you're hearing about us, we're a technology startup from Saskatoon, working on a made-in-SK solution for managing access to rural land. We got our start by winning the 2019 Innovation Saskatchewan Rural Property Access challenge and in the last year have been working hard to develop and test a platform that could help improve the reality of rural land access for everyone. We are at a point now where we're starting some real-world trials of the system in a pilot capacity.

We want to let you know that R.M. of Shellbrook (493) is where we're starting our pilot and it's now open for landowner signups! What does this mean? It means you can head over to [www.sasklander.ca](http://www.sasklander.ca) (website) right now and create a user profile with the Land Administrator role (no cost!). As a Land Administrator (owning and/or leasing) you control whether a given property is open or not for access requests. You also select the permissions you want requesters to see when they request land access.

### Permission Examples for SaskLander

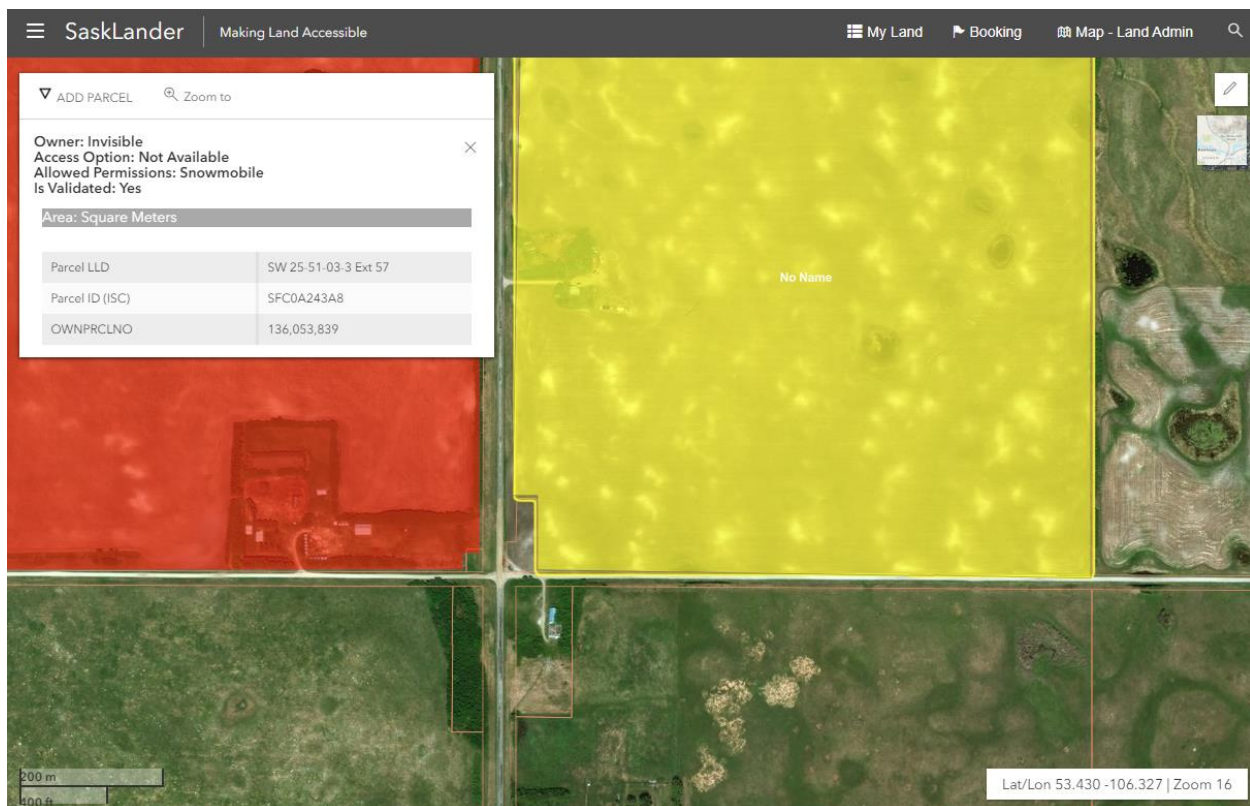


That's just a sample of access permissions that we'll keep current. There's also the Incident Reporting feature which lets you and other users of SaskLander **add** and **view** incident points such as trespassing, surface failures, or suspicious vehicles on the interactive map. This information is useful for individuals, communities, Rural Crime watches, RMs and others. We're working on a lot more features too!

Once you've signed up and completed your user verification you can begin identifying your rural property in the web map. We'll check your ownership or lease-status (owner information required), after which time you can set and control your permissions that will be visible to anyone requesting access. Once set, when other users look at the map, all they will see is your colour coded access preference:

- **Red** - No Access
- **Yellow** - Manual Access Approval
- **Green** - Automatic Access Approval

When they click the parcel, they'll be able to view the Legal Land Description and your permission set but *not your name, contact or any other personally identifying information*. This is done to ensure your privacy, and still let people know about your preferences and concerns for access. The image below is an example of what the platform currently look like when viewing the information for a parcel



At SaskLander our goal is to be the go-to service for rural landowners as well as those seeking access to that land for recreational or business use. There are some specialist apps out there for hunting and other outdoor activities. We believe that by including and focusing on landowners we can help both sides by facilitating the initial contact and improving the flow of information between parties using the web. The result we seek is to reduce overall instances of trespassing and improve on personal safety for landowners, business access and recreation alike. Please join us!

For more information check out [SaskLander.ca](http://SaskLander.ca) on the web...

Or send us an email: [info@SaskLander.ca](mailto:info@SaskLander.ca)

Thanks, from the SaskLander Team