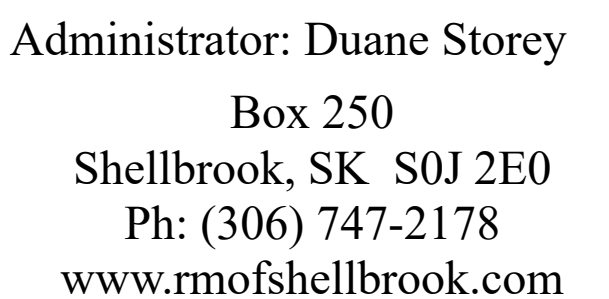









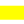










WEST OF 3rd MERIDIAN

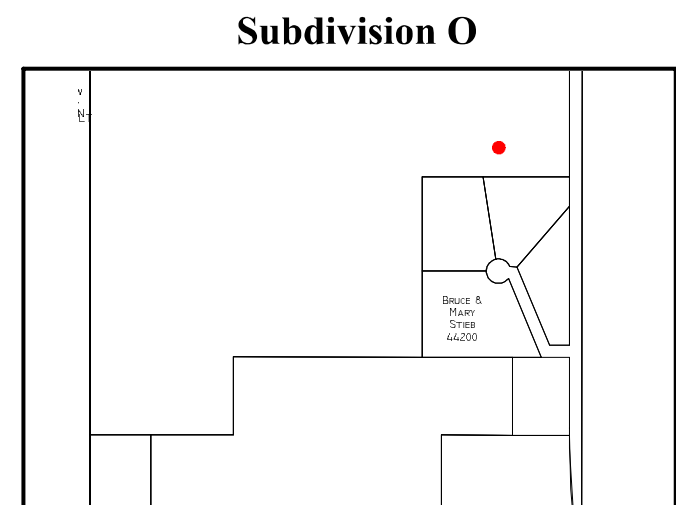
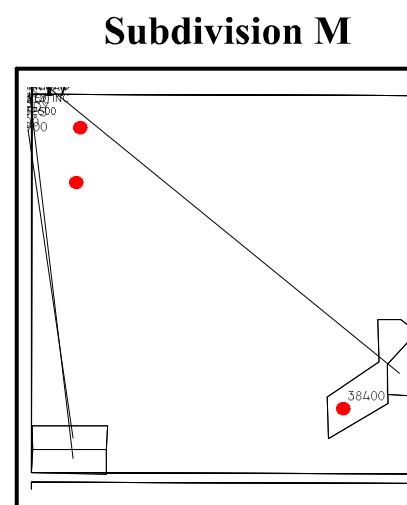
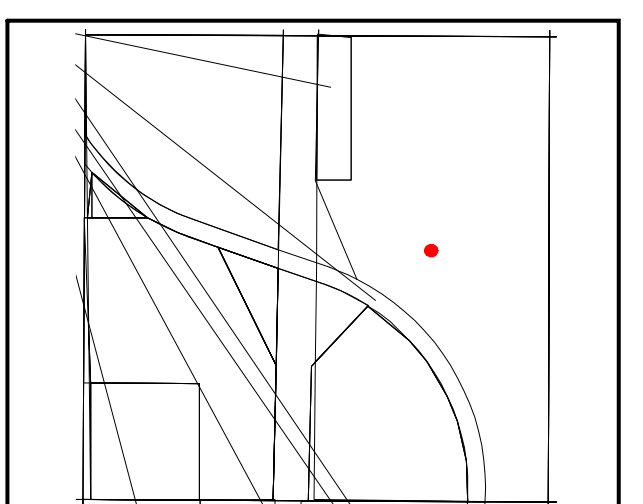
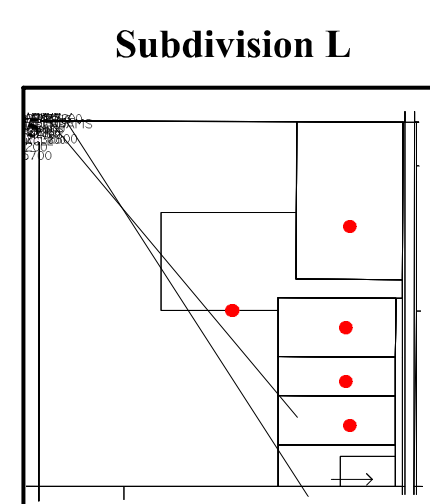
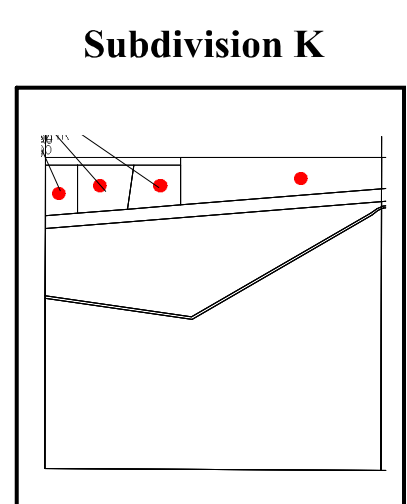
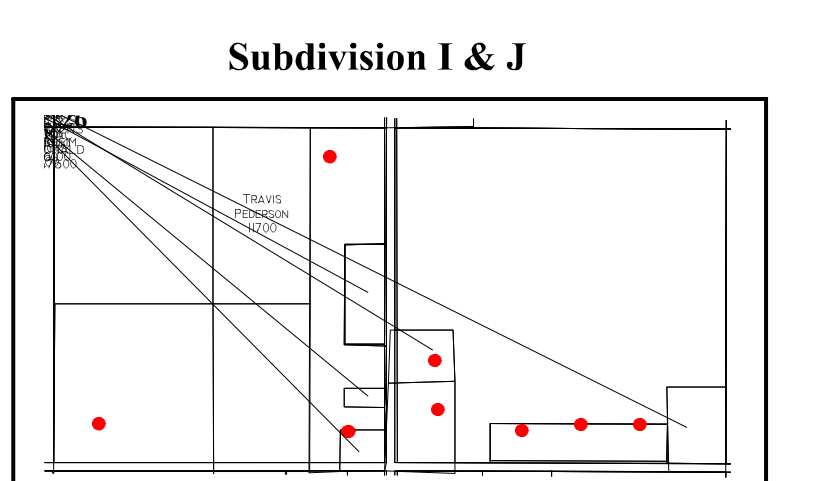
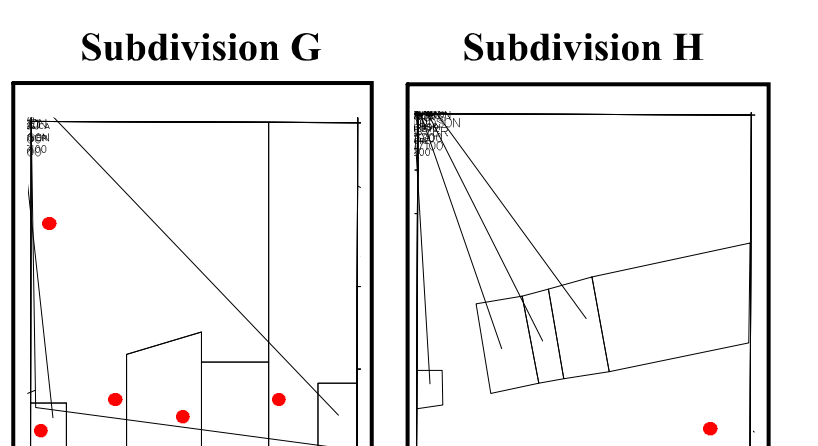
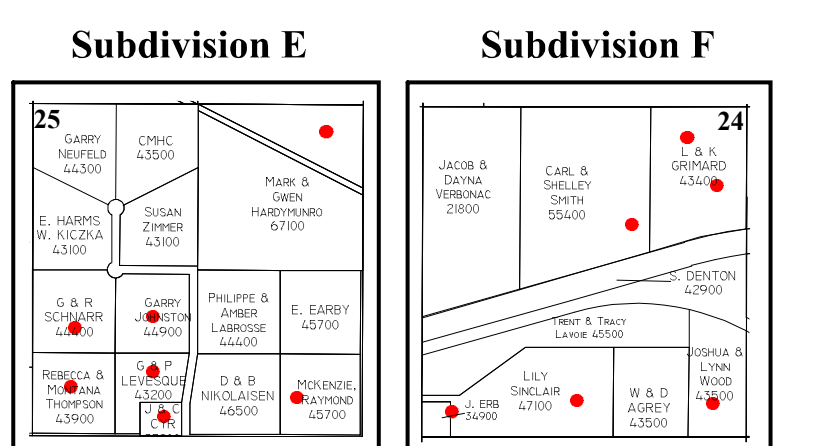
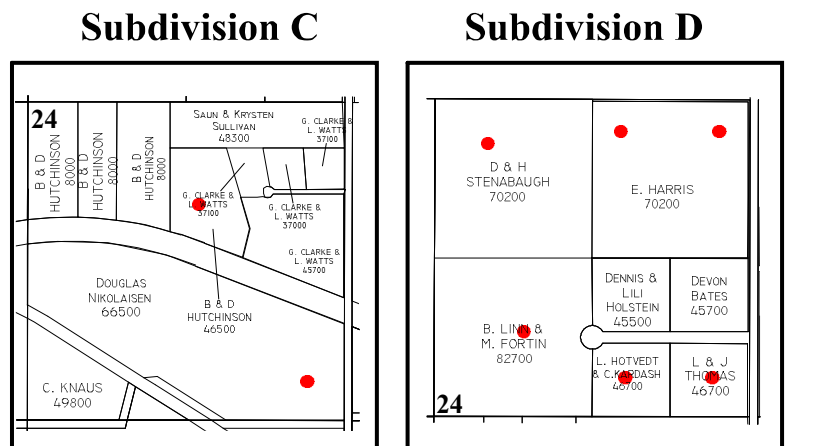
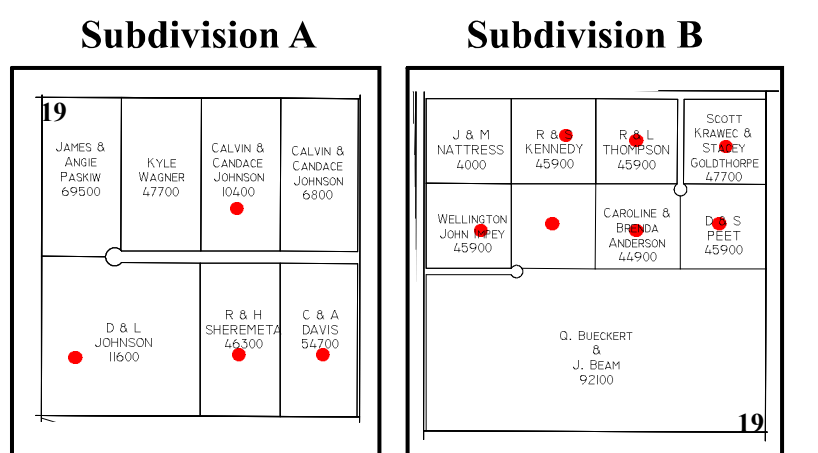


Members of Council

Reeve: Doug Oleksyn
Div. 1 : Cliff Skaug
Div. 2 : Phil Hamel
Div. 3 : Christine Strube
Div. 4 : Jay Ferster
Div. 5 : Derwin Joelson
Div. 6 : Ron Herzog

Legend

- | | |
|---|-----------------------------|
|  | Provincial Highway |
|  | Secondary Highways |
|  | Grid Road |
|  | Main Farm Access Road |
|  | Permanently Restricted Road |
|  | Designated Haul Road |
|  | Railway |
|  | Pipelines |
|  | Waterbody |
|  | Vegetation |
|  | Watercourse |
|  | Residence |
|  | Waste Disposal Site |
|  | Regional Park |
|  | Cemetery/Church |
|  | Hall |
|  | Reserve Land |
|  | Crown/Leased Land |
| | Division Boundaries |



Note:
This map has been produced by MuniSoft for the R.M. of Shellbrook No. 493 using information supplied by others. Geospatial data and topographic data (Copyright Her Majesty the Queen in Right of Canada) have been provided by Information Services Corporation of Saskatchewan for the production of this map under license to the municipality. Duplication in whole or in part prohibited. It is the responsibility of the user to verify the accuracy of the information since changes in assessment, ownership and other information may have changed since the time of printing. E&OE.

Update November 2021

